

IN THE DISTRICT COURT OF THE FIFTH JUDICIAL DISTRICT OF THE
 STATE OF IDAHO, IN AND FOR THE COUNTY OF TWIN FALLS

In Re CSRBA) PARTIAL DECREE PURSUANT TO I.R.C.P. 54(b)
) FOR FEDERAL RESERVED
 Case No. 49576)
) WATER RIGHT NO. 94-09526A

NAME AND ADDRESS: UNITED STATES OF AMERICA ACTING THROUGH
 USDA FOREST SERVICE
 550 W FORT ST MSC 033
 BOISE ID 83724

SOURCE: See Attachment 1, Column A TRIBUTARY: See Attachment 1, Column B

Sources are located on National Forest System Land in the Iron Creek-Little N. Fork
 Coeur d'Alene River subwatershed (HUC12 170103010601).

QUANTITY: The amount of water necessary to control and suppress forest fires.

PRIORITY DATE: 11/06/1906

POINT OF DIVERSION: See Attachment 1, Columns C through G

PURPOSE AND PERIOD OF USE:

<u>PURPOSE OF USE</u>	<u>PERIOD OF USE</u>
Administrative-Fire Suppression	01/01 - 12/31

PLACE OF USE: National Forests in Idaho and the Kaniksu, Lolo and Kootenai National Forests in
 Montana.

See Attachment 2.

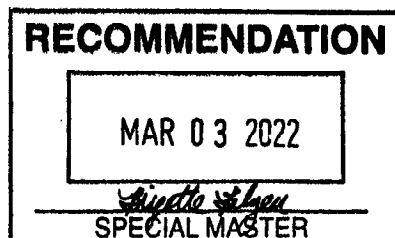
OTHER PROVISIONS NECESSARY FOR DEFINITION OR ADMINISTRATION OF THIS WATER RIGHT:

This right is limited to the intermittent diversion and use of water for the purpose
 of suppressing wildfires. This water right shall not be used as a basis to prevent
 the future appropriation of water.

This partial decree is subject to such general provisions necessary for the
 definition of the rights or for the efficient administration of the water rights as
 may be ultimately determined by the Court at a point in time no later than the entry
 of a final unified decree. Idaho Code § 42-1412(6).

RULE 54(b) CERTIFICATE

With respect to the issues determined by the above partial judgment it is hereby CERTIFIED, in accordance
 with Rule 54(b), I.R.C.P., that the court has determined that there is no just reason for delay of the entry of a
 final judgment and that the court has and does hereby direct that the above partial judgment is a final judgment
 upon which execution may issue and an appeal may be taken as provided by the Idaho Appellate Rules.



Eric J. Wildman
 Presiding Judge of the
 Coeur d'Alene-Spokane River Adjudication

Attachment 1

	A	B	C	D	E	F	G
001	SOURCE NAME	TO TRIBUTARY	TOWNSHIP	RANGE	SECTION	QQ	SURVEY CODE AND NUMBER
002	Barney Creek	Little North Fork Coeur d'Alene River	51N	01W	05		
003	Little Creek	Little North Fork Coeur d'Alene River	51N	01W	05		
004	Unnamed Stream	Barney Creek	51N	01W	05		
005	Unnamed Stream	Little North Fork Coeur d'Alene River	51N	01W	05		
006	Nicholas Creek	Little North Fork Coeur d'Alene River	51N	01W	06	NENW	
007	Little Creek	Little North Fork Coeur d'Alene River	51N	01W	06	NESE	
008	Little North Fork Coeur d'Alene River	North Fork Coeur d'Alene River	51N	01W	06	NESE	
009	Unnamed Stream	Little North Fork Coeur d'Alene River	51N	01W	06	NESE	
010	Unnamed Stream	Little North Fork Coeur d'Alene River	51N	01W	06	NESE	
011	Unnamed Stream	Little North Fork Coeur d'Alene River	51N	01W	06	NESW	
012	Little North Fork Coeur d'Alene River	North Fork Coeur d'Alene River	51N	01W	06	NWNE	HES 481B
013	Canyon Fork	Nicholas Creek	51N	01W	06	NWNW	L 1
014	Nicholas Creek	Little North Fork Coeur d'Alene River	51N	01W	06	NWNW	L 1
015	Unnamed Stream	Nicholas Creek	51N	01W	06	NWNW	L 1
016	Little North Fork Coeur d'Alene River	North Fork Coeur d'Alene River	51N	01W	06	NWSE	
017	Unnamed Stream	Little North Fork Coeur d'Alene River	51N	01W	06	NWSE	
018	Unnamed Stream	Little North Fork Coeur d'Alene River	51N	01W	06	NWSE	
019	Unnamed Stream	Little North Fork Coeur d'Alene River	51N	01W	06	NWSE	
020	Barney Creek	Little North Fork Coeur d'Alene River	51N	01W	06	SENE	
021	Nicholas Creek	Little North Fork Coeur d'Alene River	51N	01W	06	SENE	
022	Little North Fork Coeur d'Alene River	North Fork Coeur d'Alene River	51N	01W	06	SESE	
023	Unnamed Stream	Little North Fork Coeur d'Alene River	51N	01W	06	SESE	
024	Barney Creek	Little North Fork Coeur d'Alene River	51N	01W	06	SWNE	
025	Little North Fork Coeur d'Alene River	North Fork Coeur d'Alene River	51N	01W	06	SWNE	
026	Nicholas Creek	Little North Fork Coeur d'Alene River	51N	01W	06	SWNE	
027	Canyon Fork	Nicholas Creek	51N	01W	06	SWNW	L 2
028	Little North Fork Coeur d'Alene River	North Fork Coeur d'Alene River	51N	01W	06	SWSE	
029	Beaver Creek	Little North Fork Coeur d'Alene River	51N	01W	06	SWSW	L 4
030	Beaver Creek	Little North Fork Coeur d'Alene River	51N	01W	07		
031	Cathcart Creek	Little North Fork Coeur d'Alene River	51N	01W	07		
032	Little North Fork Coeur d'Alene River	North Fork Coeur d'Alene River	51N	01W	07		
033	Canyon Fork	Nicholas Creek	51N	02W	01		
034	Unnamed Stream	Canyon Fork	51N	02W	01		
035	Unnamed Stream	Canyon Fork	51N	02W	01		
036	Canyon Fork	Nicholas Creek	51N	02W	02		
037	Nicholas Creek	Little North Fork Coeur d'Alene River	51N	02W	02		
038	Unnamed Stream	Canyon Fork	51N	02W	02		
039	Cathcart Creek	Little North Fork Coeur d'Alene River	51N	02W	12		
040	East Fork Solitaire Creek	Solitaire Creek	52N	01W	03		
041	Honey Creek	Little North Fork Coeur d'Alene River	52N	01W	03		
042	Iron Creek	Little North Fork Coeur d'Alene River	52N	01W	03		
043	Sob Creek	Little North Fork Coeur d'Alene River	52N	01W	03		

Attachment 1

	A	B	C	D	E	F	G
001	SOURCE NAME	TO TRIBUTARY	TOWNSHIP	RANGE	SECTION	OO	SURVEY CODE AND NUMBER
044	Unnamed Stream	Honey Creek	52N	01W	03		
045	Sob Creek	Little North Fork Coeur d'Alene River	52N	01W	04		
046	Unnamed Stream	Sob Creek	52N	01W	04		
047	West Fork Solitaire Creek	Solitaire Creek	52N	01W	04		
048	Little North Fork Coeur d'Alene River	North Fork Coeur d'Alene River	52N	01W	05		
049	McHarg Creek	Little North Fork Coeur d'Alene River	52N	01W	05		
050	Sob Creek	Little North Fork Coeur d'Alene River	52N	01W	05		
051	Unnamed Stream	Little North Fork Coeur d'Alene River	52N	01W	05		
052	Unnamed Stream	Sob Creek	52N	01W	05		
053	West Fork Solitaire Creek	Solitaire Creek	52N	01W	05		
054	McHarg Creek	Little North Fork Coeur d'Alene River	52N	01W	06		
055	Pyrite Creek	Tom Lavin Creek	52N	01W	06		
056	Unnamed Stream	Little North Fork Coeur d'Alene River	52N	01W	06		
057	Unnamed Stream	Little North Fork Coeur d'Alene River	52N	01W	06		
058	Unnamed Stream	Little North Fork Coeur d'Alene River	52N	01W	06		
059	Pyrite Creek	Tom Lavin Creek	52N	01W	07		
060	Tom Lavin Creek	Little North Fork Coeur d'Alene River	52N	01W	07		
061	Unnamed Stream	Little North Fork Coeur d'Alene River	52N	01W	07		
062	Unnamed Stream	Tom Lavin Creek	52N	01W	07		
063	Unnamed Stream	Tom Lavin Creek	52N	01W	07		
064	Unnamed Stream	Tom Lavin Creek	52N	01W	07		
065	Little North Fork Coeur d'Alene River	North Fork Coeur d'Alene River	52N	01W	08		
066	Unnamed Stream	Little North Fork Coeur d'Alene River	52N	01W	08		
067	Unnamed Stream	West Fork Solitaire Creek	52N	01W	08		
068	West Fork Solitaire Creek	Solitaire Creek	52N	01W	08		
069	East Fork Solitaire Creek	Solitaire Creek	52N	01W	09		
070	Unnamed Stream	East Fork Solitaire Creek	52N	01W	09		
071	Unnamed Stream	West Fork Solitaire Creek	52N	01W	09		
072	East Fork Solitaire Creek	Solitaire Creek	52N	01W	10		
073	Iron Creek	Little North Fork Coeur d'Alene River	52N	01W	10		
074	Unnamed Stream	Iron Creek	52N	01W	10		
075	Unnamed Stream	Iron Creek	52N	01W	10		
076	Unnamed Stream	Iron Creek	52N	01W	14		
077	Unnamed Stream	Iron Creek	52N	01W	14		
078	Unnamed Stream	Iron Creek	52N	01W	14		
079	Unnamed Stream	Iron Creek	52N	01W	14		
080	Unnamed Stream	Iron Creek	52N	01W	14		
081	Unnamed Stream	Iron Creek	52N	01W	14		
082	Iron Creek	Little North Fork Coeur d'Alene River	52N	01W	15		
083	Unnamed Stream	Iron Creek	52N	01W	15		
084	Unnamed Stream	Iron Creek	52N	01W	15		
085	Unnamed Stream	Iron Creek	52N	01W	15		

Attachment 1

	A	B	C	D	E	F	G
001	SOURCE NAME	TO TRIBUTARY	TOWNSHIP	RANGE	SECTION	QQ	SURVEY CODE AND NUMBER
086	Unnamed Stream	Iron Creek	52N	01W	15		
087	East Fork Solitaire Creek	Solitaire Creek	52N	01W	16		
088	Rusty Creek	Iron Creek	52N	01W	16		
089	Silver RUnnamed Stream	Iron Creek	52N	01W	16		
090	Unnamed Stream	East Fork Solitaire Creek	52N	01W	16		
091	Unnamed Stream	Iron Creek	52N	01W	16		
092	Unnamed Stream	Iron Creek	52N	01W	16		
093	Unnamed Stream	Solitaire Creek	52N	01W	16		
094	East Fork Solitaire Creek	Solitaire Creek	52N	01W	17		
095	Hamburg Creek	Little North Fork Coeur d'Alene River	52N	01W	17		
096	Little North Fork Coeur d'Alene River	North Fork Coeur d'Alene River	52N	01W	17		
097	Solitaire Creek	Little North Fork Coeur d'Alene River	52N	01W	17		
098	Tom Lavin Creek	Little North Fork Coeur d'Alene River	52N	01W	17		
099	Unnamed Stream	Solitaire Creek	52N	01W	17		
100	West Fork Solitaire Creek	Solitaire Creek	52N	01W	17		
101	Hamburg Creek	Little North Fork Coeur d'Alene River	52N	01W	18		
102	Lewelling Creek	Little North Fork Coeur d'Alene River	52N	01W	18		
103	Tom Lavin Creek	Little North Fork Coeur d'Alene River	52N	01W	18		
104	Unnamed Stream	Lewelling Creek	52N	01W	18		
105	Unnamed Stream	Lewelling Creek	52N	01W	18		
106	Unnamed Stream	Lewelling Creek	52N	01W	18		
107	Unnamed Stream	Lewelling Creek	52N	01W	18		
108	Unnamed Stream	Lewelling Creek	52N	01W	18		
109	Unnamed Stream	Tom Lavin Creek	52N	01W	18		
110	East Fork Hudlow Creek	Hudlow Creek	52N	01W	19		
111	Lewelling Creek	Little North Fork Coeur d'Alene River	52N	01W	19		
112	Little North Fork Coeur d'Alene River	North Fork Coeur d'Alene River	52N	01W	19		
113	Squirrel Creek	Little North Fork Coeur d'Alene River	52N	01W	19		
114	Unnamed Stream	Lewelling Creek	52N	01W	19		
115	Unnamed Stream	Lewelling Creek	52N	01W	19		
116	Unnamed Stream	Lewelling Creek	52N	01W	19		
117	Gravel RUnnamed Stream	Iron Creek	52N	01W	20		
118	Iron Creek	Little North Fork Coeur d'Alene River	52N	01W	20		
119	Lead Creek	Iron Creek	52N	01W	20		
120	Lewelling Creek	Little North Fork Coeur d'Alene River	52N	01W	20		
121	Little North Fork Coeur d'Alene River	North Fork Coeur d'Alene River	52N	01W	20		
122	Unnamed Stream	Iron Creek	52N	01W	20		
123	Unnamed Stream	Lewelling Creek	52N	01W	20		
124	Unnamed Stream	Little North Fork Coeur d'Alene River	52N	01W	20		
125	Boulder Creek	Iron Creek	52N	01W	21		
126	Iron Creek	Little North Fork Coeur d'Alene River	52N	01W	21		
127	Lead Creek	Iron Creek	52N	01W	21		

Attachment 1

	A	B	C	D	E	F	G
001	SOURCE NAME	TO TRIBUTARY	TOWNSHIP	RANGE	SECTION	QQ	SURVEY CODE AND NUMBER
128	Moose Creek	Iron Creek	52N	01W	21		
129	Rablens Fork	Iron Creek	52N	01W	21		
130	Rusty Creek	Iron Creek	52N	01W	21		
131	Silver RUnnamed Stream	Iron Creek	52N	01W	21		
132	Unnamed Stream	Iron Creek	52N	01W	21		
133	Iron Creek	Little North Fork Coeur d'Alene River	52N	01W	22		
134	Rablens Fork	Iron Creek	52N	01W	22		
135	Unnamed Stream	Iron Creek	52N	01W	22		
136	Unnamed Stream	Rablens Fork	52N	01W	22		
137	Unnamed Stream	Iron Creek	52N	01W	23		
138	Unnamed Stream	Iron Creek	52N	01W	23		
139	Unnamed Stream	Rablens Fork	52N	01W	23		
140	Unnamed Stream	Iron Creek	52N	01W	24		
141	Rablens Fork	Iron Creek	52N	01W	26		
142	Barney Creek	Little North Fork Coeur d'Alene River	52N	01W	27		
143	Moose Creek	Iron Creek	52N	01W	27		
144	Rablens Fork	Iron Creek	52N	01W	27		
145	Unnamed Stream	Barney Creek	52N	01W	27		
146	Unnamed Stream	Rablens Fork	52N	01W	27		
147	Arguement Creek	Barney Creek	52N	01W	28		
148	Barney Creek	Little North Fork Coeur d'Alene River	52N	01W	28		
149	Moose Creek	Iron Creek	52N	01W	28		
150	Unmamed Stream	Arguement Creek	52N	01W	28		
151	Unnamed Stream	Moose Creek	52N	01W	28		
152	Gravel RUnnamed Stream	Iron Creek	52N	01W	29	NENE	HES 686A
153	Gravel RUnnamed Stream	Iron Creek	52N	01W	29	NENE	HES 686B
154	Iron Creek	Little North Fork Coeur d'Alene River	52N	01W	29	NENE	HES 686A
155	Iron Creek	Little North Fork Coeur d'Alene River	52N	01W	29	NESW	L 10
156	Unnamed Stream	Iron Creek	52N	01W	29	NWNE	HES 686A
157	Unnamed Stream	Iron Creek	52N	01W	29	NWNE	HES 686B
158	Unnamed Stream	Iron Creek	52N	01W	29	NWNE	L 3
159	Little North Fork Coeur d'Alene River	North Fork Coeur d'Alene River	52N	01W	29	NWNW	HES 770A
160	Little North Fork Coeur d'Alene River	North Fork Coeur d'Alene River	52N	01W	29	NWNW	L 6
161	Squirrel Creek	Little North Fork Coeur d'Alene River	52N	01W	29	NWNW	L 6
162	Iron Creek	Little North Fork Coeur d'Alene River	52N	01W	29	NWSW	L 11
163	Little North Fork Coeur d'Alene River	North Fork Coeur d'Alene River	52N	01W	29	NWSW	L 11
164	Unnamed Stream	Iron Creek	52N	01W	29	NWSW	L 11
165	Scribe Creek	Barney Creek	52N	01W	29	SESE	
166	Little North Fork Coeur d'Alene River	North Fork Coeur d'Alene River	52N	01W	29	SWNW	L 7
167	Iron Creek	Little North Fork Coeur d'Alene River	52N	01W	29	SWSW	
168	Little North Fork Coeur d'Alene River	North Fork Coeur d'Alene River	52N	01W	29	SWSW	
169	Unnamed Stream	Iron Creek	52N	01W	29	SWSW	

Attachment 1

	A	B	C	D	E	F	G
001	SOURCE NAME	TO TRIBUTARY	TOWNSHIP	RANGE	SECTION	QQ	SURVEY CODE AND NUMBER
170	East Fork Hudlow Creek	Hudlow Creek	52N	01W	30		
171	Hudlow Creek	Little North Fork Coeur d'Alene River	52N	01W	30		
172	Squirrel Creek	Little North Fork Coeur d'Alene River	52N	01W	30		
173	Little North Fork Coeur d'Alene River	North Fork Coeur d'Alene River	52N	01W	31	NENE	
174	Hudlow Creek	Little North Fork Coeur d'Alene River	52N	01W	31	NENW	
175	Hudlow Creek	Little North Fork Coeur d'Alene River	52N	01W	31	NESE	
176	Little North Fork Coeur d'Alene River	North Fork Coeur d'Alene River	52N	01W	31	NESE	
177	Hudlow Creek	Little North Fork Coeur d'Alene River	52N	01W	31	NWNE	
178	Little North Fork Coeur d'Alene River	North Fork Coeur d'Alene River	52N	01W	31	NWSE	
179	Unnamed Stream	Nicholas Creek	52N	01W	31	NWSW	L 3
180	Hudlow Creek	Little North Fork Coeur d'Alene River	52N	01W	31	SENE	
181	Little North Fork Coeur d'Alene River	North Fork Coeur d'Alene River	52N	01W	31	SENE	
182	Little North Fork Coeur d'Alene River	North Fork Coeur d'Alene River	52N	01W	31	SESE	L 6
183	Hudlow Creek	Little North Fork Coeur d'Alene River	52N	01W	31	SWNE	
184	Unnamed Stream	Nicholas Creek	52N	01W	31	SWNW	L 2
185	Nicholas Creek	Little North Fork Coeur d'Alene River	52N	01W	31	SWSW	L 4
186	Unnamed Stream	Nicholas Creek	52N	01W	31	SWSW	L 4
187	Barney Creek	Little North Fork Coeur d'Alene River	52N	01W	32		
188	Little North Fork Coeur d'Alene River	North Fork Coeur d'Alene River	52N	01W	32		
189	Scribe Creek	Barney Creek	52N	01W	32		
190	Unnamed Stream	Barney Creek	52N	01W	32		
191	Unnamed Stream	Barney Creek	52N	01W	32		
192	Unnamed Stream	Barney Creek	52N	01W	32		
193	Unnamed Stream	Barney Creek	52N	01W	32		
194	Unnamed Stream	Barney Creek	52N	01W	32		
195	Arguement Creek	Barney Creek	52N	01W	33		
196	Barney Creek	Little North Fork Coeur d'Alene River	52N	01W	33		
197	Scribe Creek	Barney Creek	52N	01W	33		
198	Unnamed Stream	Barney Creek	52N	01W	33		
199	Unnamed Stream	Barney Creek	52N	01W	33		
200	Unnamed Stream	Barney Creek	52N	01W	33		
201	Barney Creek	Little North Fork Coeur d'Alene River	52N	01W	34		
202	Unnamed Stream	Barney Creek	52N	01W	34		
203	Unnamed Stream	Barney Creek	52N	01W	34		
204	Barney Creek	Little North Fork Coeur d'Alene River	52N	01W	35		
205	Tom Lavin Creek	Little North Fork Coeur d'Alene River	52N	02W	01		
206	Unnamed Stream	Tom Lavin Creek	52N	02W	01		
207	Lewelling Creek	Little North Fork Coeur d'Alene River	52N	02W	12		
208	Tom Lavin Creek	Little North Fork Coeur d'Alene River	52N	02W	12		
209	Unnamed Stream	Tom Lavin Creek	52N	02W	12		
210	Unnamed Stream	Tom Lavin Creek	52N	02W	12		
211	Lewelling Creek	Little North Fork Coeur d'Alene River	52N	02W	13		

Attachment 1


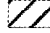



	A	B	C	D	E	F	G
001	SOURCE NAME	TO TRIBUTARY	TOWNSHIP	RANGE	SECTION	OO	SURVEY CODE AND NUMBER
212	Unnamed Stream	Lewelling Creek	52N	02W	13		
213	Unnamed Stream	Lewelling Creek	52N	02W	13		
214	Unnamed Stream	Lewelling Creek	52N	02W	13		
215	Unnamed Stream	Middle Fork Hudlow Creek	52N	02W	13		
216	Middle Fork Hudlow Creek	Hudlow Creek	52N	02W	14		
217	Unnamed Stream	Middle Fork Hudlow Creek	52N	02W	14		
218	Middle Fork Hudlow Creek	Hudlow Creek	52N	02W	23		
219	Unnamed Stream	Middle Fork Hudlow Creek	52N	02W	23		
220	West Fork Hudlow Creek	Hudlow Creek	52N	02W	23		
221	Middle Fork Hudlow Creek	Hudlow Creek	52N	02W	24		
222	Unnamed Stream	Middle Fork Hudlow Creek	52N	02W	24		
223	Unnamed Stream	Middle Fork Hudlow Creek	52N	02W	24		
224	West Fork Hudlow Creek	Hudlow Creek	52N	02W	24		
225	Hudlow Creek	Little North Fork Coeur d'Alene River	52N	02W	25		
226	Middle Fork Hudlow Creek	Hudlow Creek	52N	02W	25		
227	Unnamed Stream	West Fork Hudlow Creek	52N	02W	25		
228	Unnamed Stream	West Fork Hudlow Creek	52N	02W	25		
229	Unnamed Stream	West Fork Hudlow Creek	52N	02W	25		
230	West Fork Hudlow Creek	Hudlow Creek	52N	02W	25		
231	Unnamed Stream	West Fork Hudlow Creek	52N	02W	26		
232	Unnamed Stream	West Fork Hudlow Creek	52N	02W	26		
233	Unnamed Stream	West Fork Hudlow Creek	52N	02W	26		
234	Nicholas Creek	Little North Fork Coeur d'Alene River	52N	02W	35		
235	Unnamed Stream	Nicholas Creek	52N	02W	35		
236	Unnamed Stream	Nicholas Creek	52N	02W	35		
237	Nicholas Creek	Little North Fork Coeur d'Alene River	52N	02W	36		
238	Unnamed Stream	Nicholas Creek	52N	02W	36		
239	Little North Fork Coeur d'Alene River	North Fork Coeur d'Alene River	53N	01W	29		
240	Prospect Creek	Honey Creek	53N	01W	29		
241	Little North Fork Coeur d'Alene River	North Fork Coeur d'Alene River	53N	01W	30		
242	Little North Fork Coeur d'Alene River	North Fork Coeur d'Alene River	53N	01W	31		
243	Unnamed Stream	Little North Fork Coeur d'Alene River	53N	01W	31		
244	Unnamed Stream	Little North Fork Coeur d'Alene River	53N	01W	31		
245	Unnamed Stream	Little North Fork Coeur d'Alene River	53N	01W	31		
246	Honey Creek	Little North Fork Coeur d'Alene River	53N	01W	32		
247	Little North Fork Coeur d'Alene River	North Fork Coeur d'Alene River	53N	01W	32		
248	Prospect Creek	Honey Creek	53N	01W	32		
249	Unnamed Stream	Honey Creek	53N	01W	32		
250	Unnamed Stream	Little North Fork Coeur d'Alene River	53N	01W	32		
251	Unnamed Stream	Little North Fork Coeur d'Alene River	53N	01W	32		
252	Unnamed Stream	Little North Fork Coeur d'Alene River	53N	01W	32		
253	Honey Creek	Little North Fork Coeur d'Alene River	53N	01W	33		

Attachment 1

	A	B	C	D	E	F	G
001	SOURCE NAME	TO TRIBUTARY	TOWNSHIP	RANGE	SECTION	QQ	SURVEY CODE AND NUMBER
254	Prospect Creek	Honey Creek	53N	01W	33		
255	Unnamed Stream	Honey Creek	53N	01W	33		
256	Unnamed Stream	Honey Creek	53N	01W	33		
257	Honey Creek	Little North Fork Coeur d'Alene River	53N	01W	34		
258	Unnamed Stream	Honey Creek	53N	01W	34		
259	Unnamed Stream	Honey Creek	53N	01W	34		
260	Little North Fork Coeur d'Alene River	North Fork Coeur d'Alene River	53N	02W	25		
261	Little North Fork Coeur d'Alene River	North Fork Coeur d'Alene River	53N	02W	36		
262	Unnamed Stream	Little North Fork Coeur d'Alene River	53N	02W	36		
263	Unnamed Stream	Little North Fork Coeur d'Alene River	53N	02W	36		
264	Unnamed Stream	Little North Fork Coeur d'Alene River	53N	02W	36		
265	Unnamed Stream	Little North Fork Coeur d'Alene River	53N	02W	36		
266	Unnamed Stream	Little North Fork Coeur d'Alene River	53N	02W	36		
267	Unnamed Stream	Little North Fork Coeur d'Alene River	53N	02W	36		
268	Unnamed Stream	Little North Fork Coeur d'Alene River	53N	02W	36		
269	Unnamed Stream	Little North Fork Coeur d'Alene River	53N	02W	36		

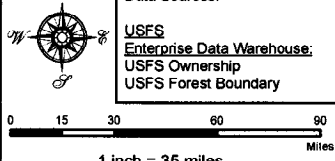
Attachment 2
Place of Use Map Fire Suppression - Water Right No. 94-09526A
National Forests in Idaho and the Kaniksu, Lolo and Kootenai NF in Montana

Key to Features

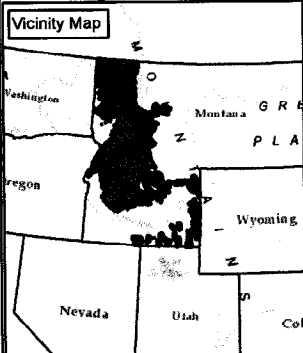
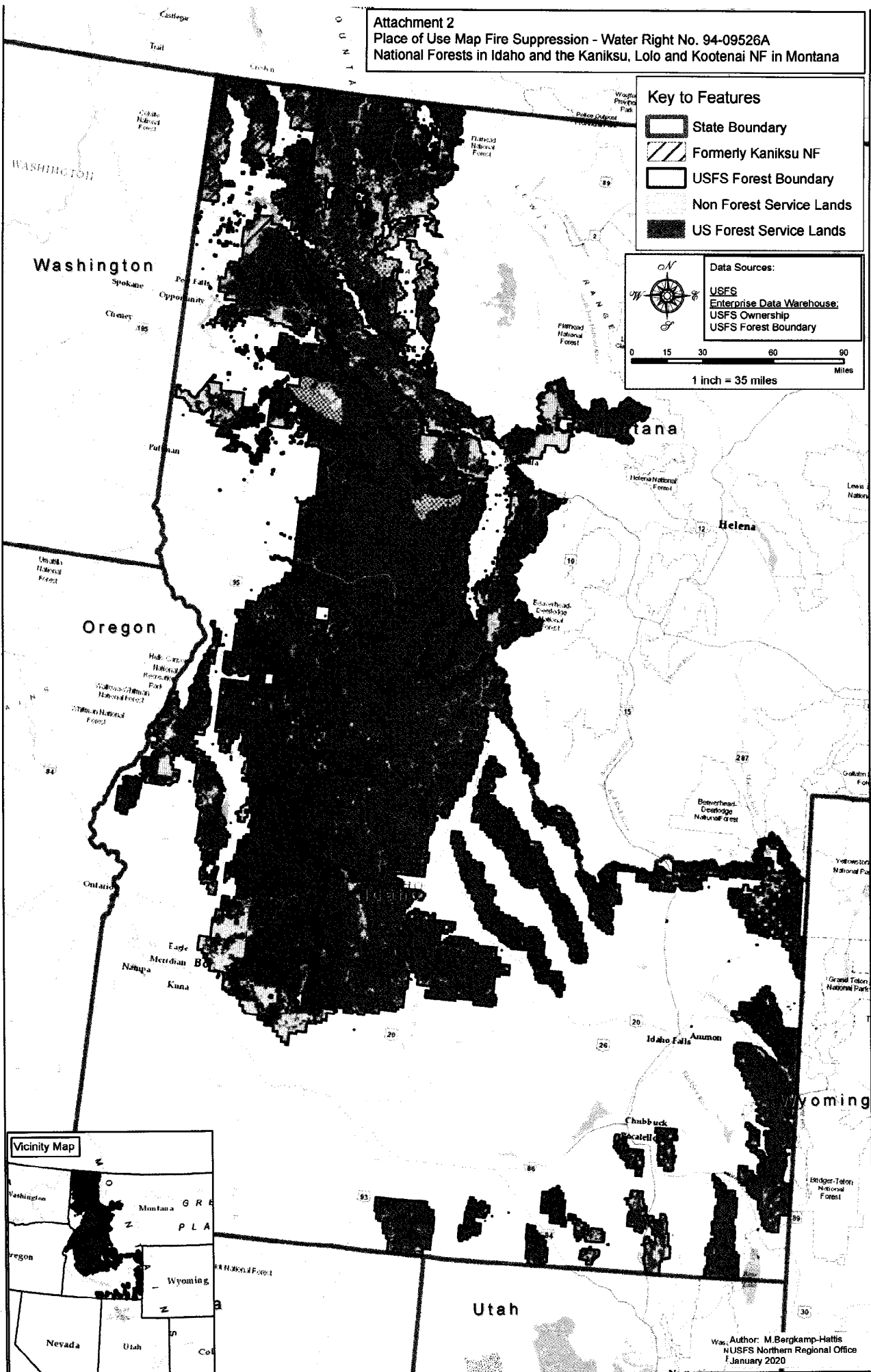
-  State Boundary
-  Formerly Kaniksu NF
-  USFS Forest Boundary
-  Non Forest Service Lands
-  US Forest Service Lands

Data Sources:

- USFS
- Enterprise Data Warehouse
- USFS Ownership
- USFS Forest Boundary



1 inch = 35 miles



Map Author: M. Bergkamp-Hattis
 NUSFS Northern Regional Office
 January 2020